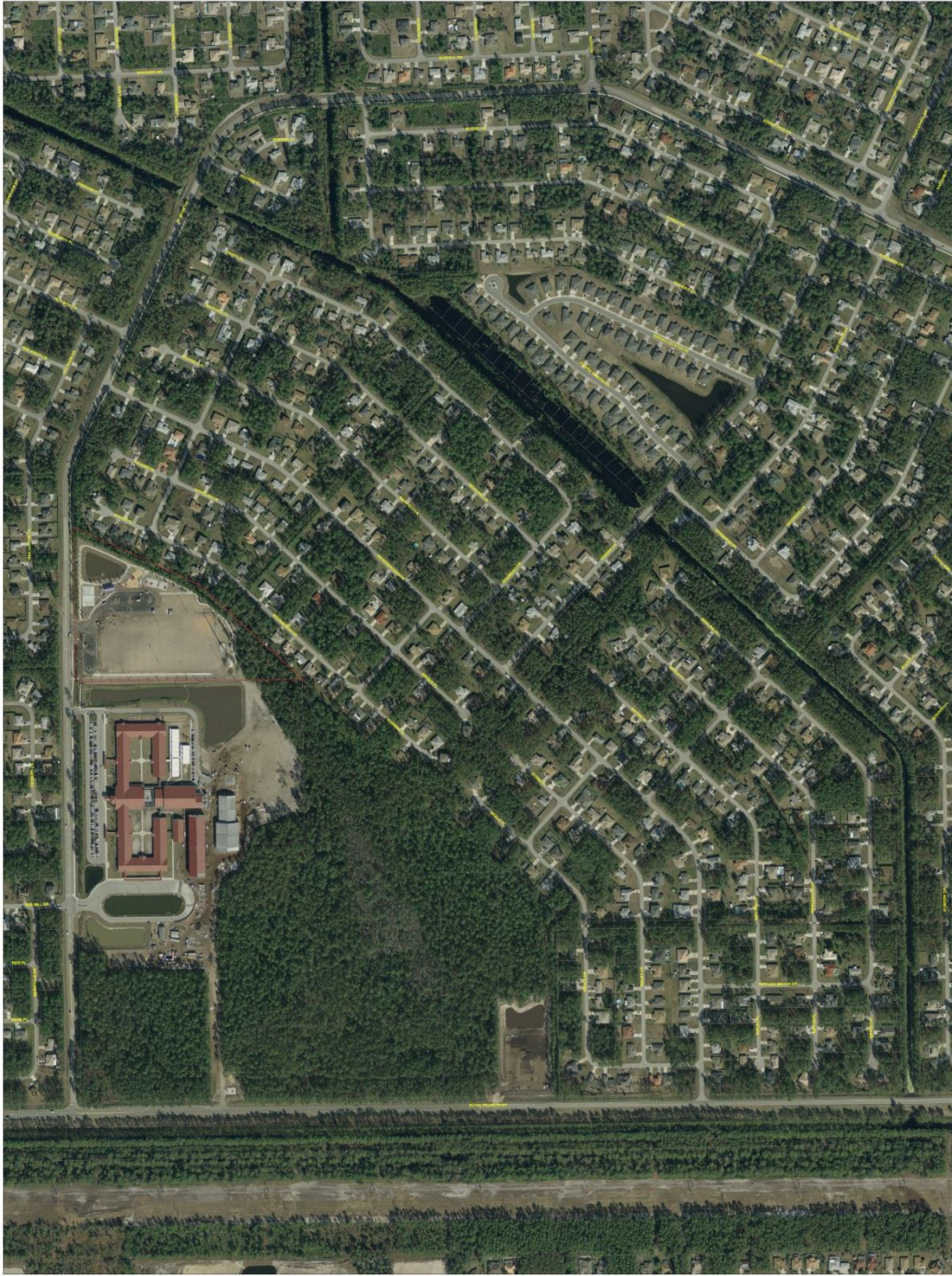


Ralph Carter Park



Community Development
Department



Ralph Carter Park



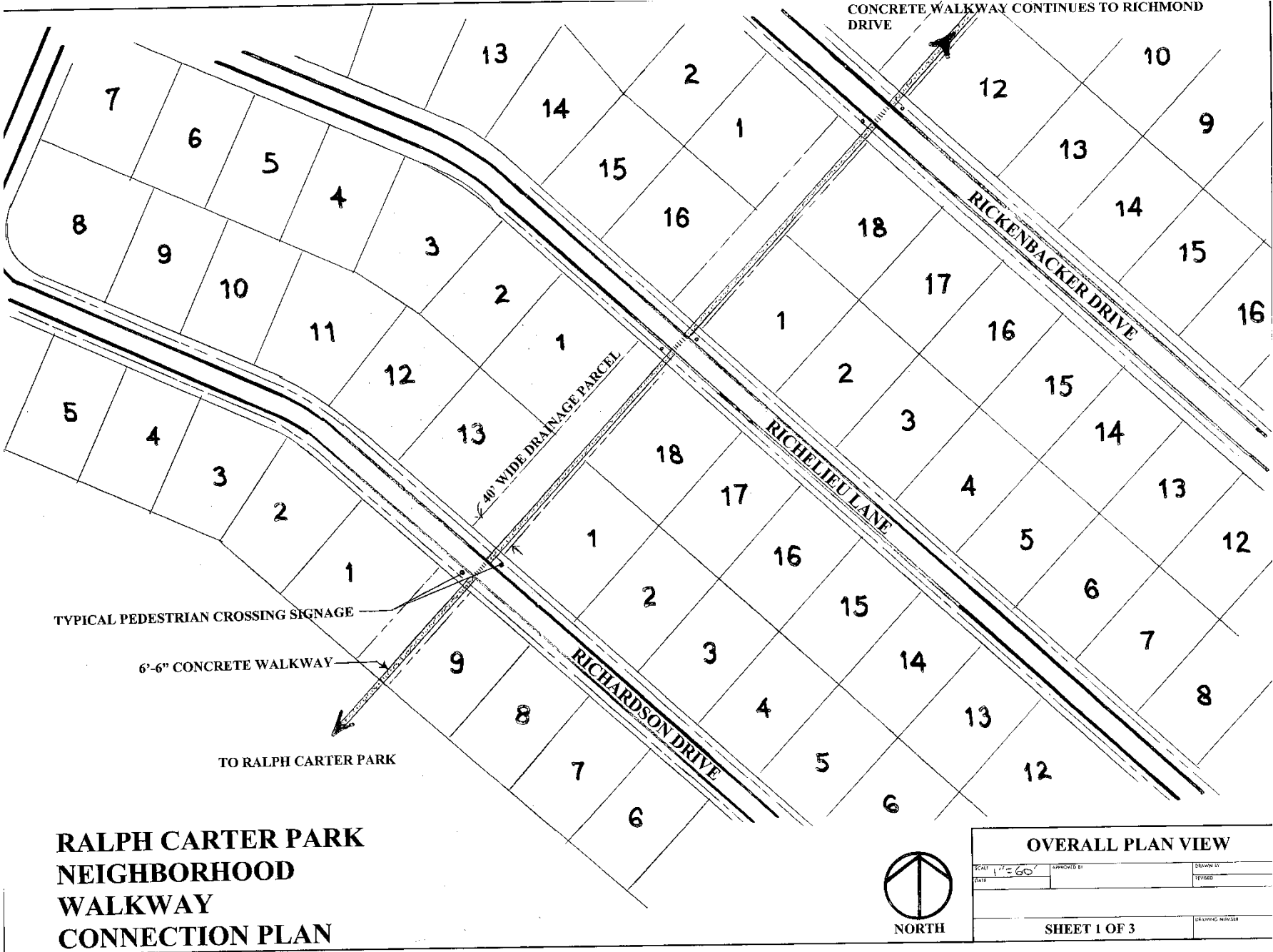
Ralph Carter Park



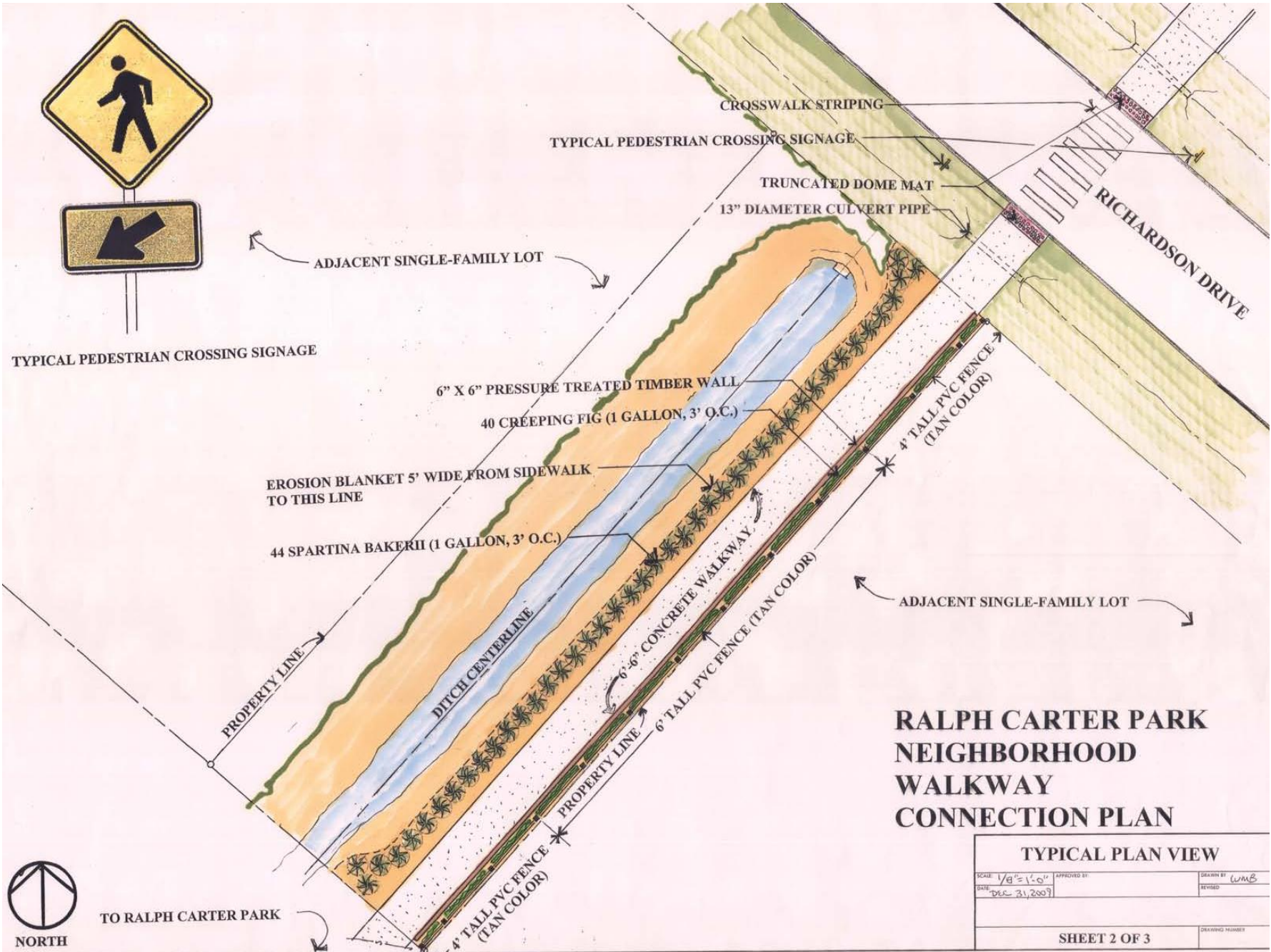
Ralph Carter Park



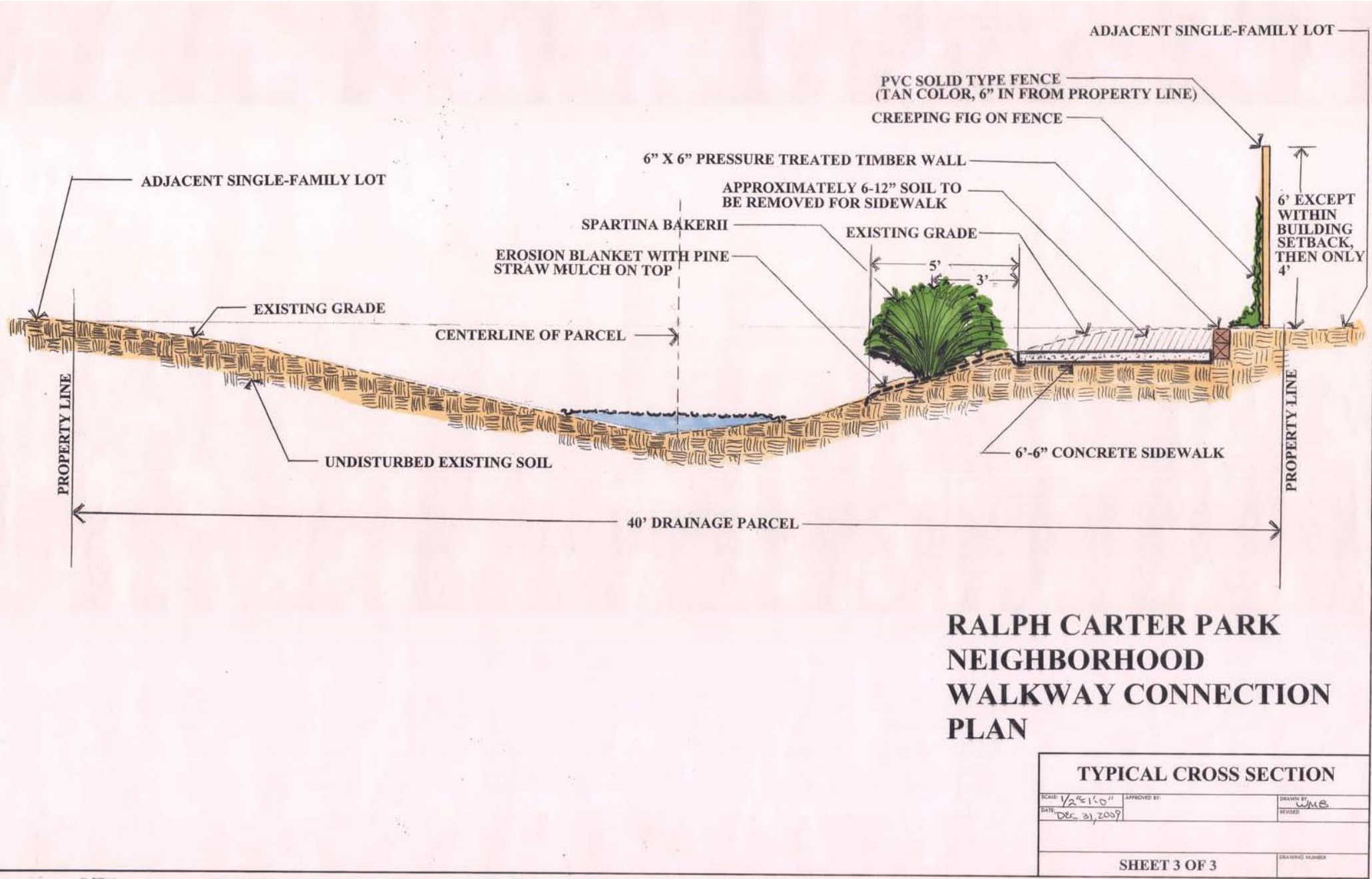
Ralph Carter Park



Ralph Carter Park



Ralph Carter Park



Ralph Carter Park

Fence Options	Segment 'A' Unit (feet)	Segment 'B' Unit (feet)	Estimated Cost
Option 1: No Fence	0	Existing	\$0.00
Option 2: 2" x 2" mesh - 9 Gauge Core	1,000	Existing	\$14,489.00
Option 3: 2" x 2" mesh - 9 Gauge Core	1,000	286	\$18,632.85
Option 4: 2" x 2" mesh - 6 Gauge Core	1,000	Existing	\$38,000.00
Option 5: 2" x 2" mesh - 6 Gauge Core	1,000	286	\$52,000.00
Option 6: 1" x 1" mesh - 9 Gauge Core	1,000	Existing	\$33,000.00
Option 7: 1" x 1" mesh - 9 Gauge Core	1,000	286	\$41,000.00
Option 8: 1" x 1" mesh - 6 Gauge Core	1,000	Existing	\$55,000.00
Option 9: 1" x 1" mesh - 6 Gauge Core	1,000	286	\$69,000.00
*Alternate #1: Path Connection (Richardson Drive to Park) ADD \$8,200.00			

